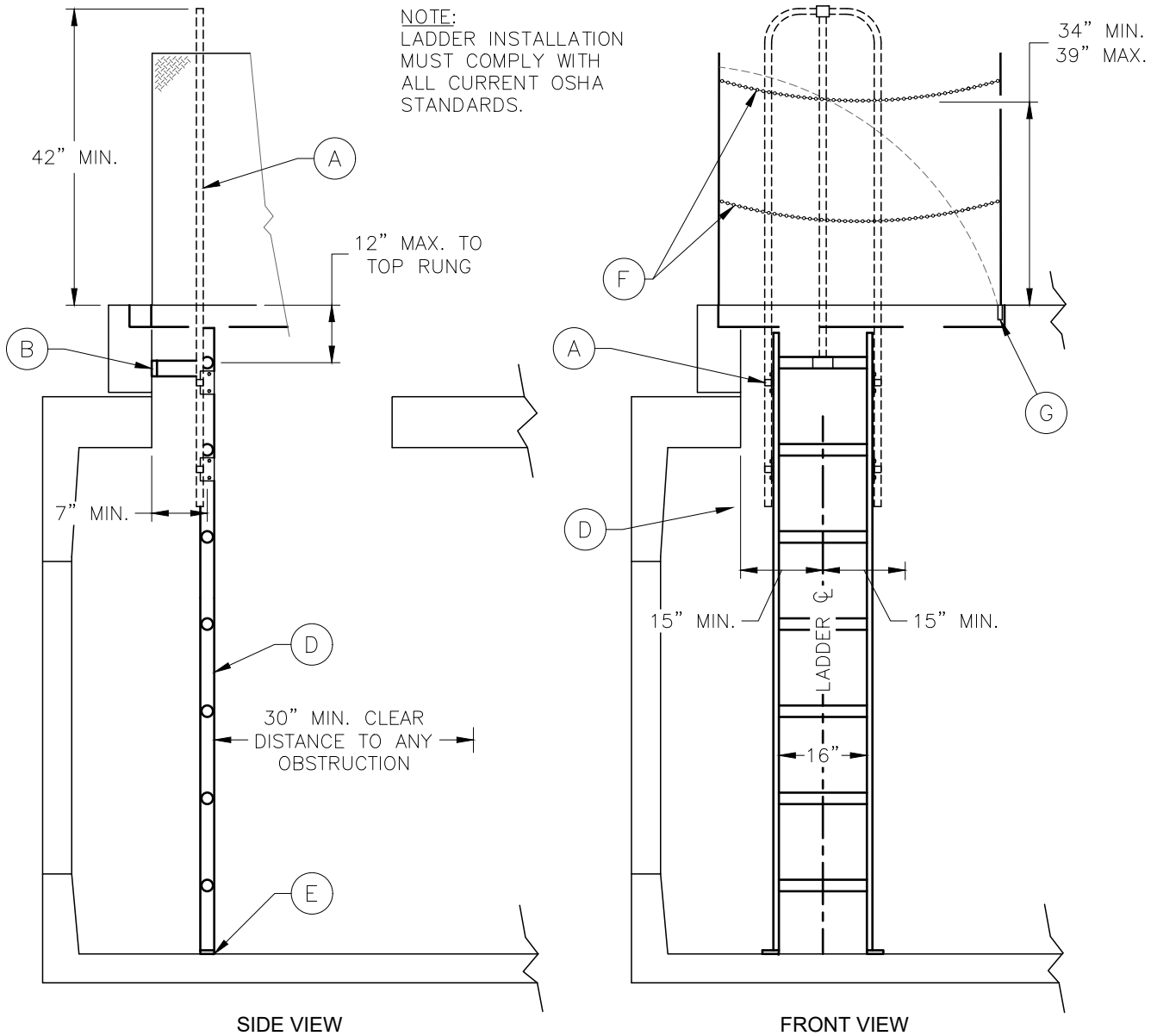


N:\Standards\2024\Details\DWG\701_Vault Ladder Installation.dwg, 6/13/2024 10:54:46 AM



KEYNOTES:

- A. LADDER EXTENSION SHALL BE ALUMINUM AND EXTEND 42" ABOVE THE TOP OF THE VAULT OPENING. EXTENSION SHALL BE CPP COLUMBIA ALUMINUM LADDER EXTENSION OR APPROVED EQUAL.
- B. ATTACH LADDER SUPPORT TO INSIDE FACE OF VAULT COVER OPENING WITH STAINLESS STEEL HARDWARE AS SHOWN. ϕ OF RUNG MUST BE SET 7" FROM FACE OF SURFACE BEHIND RUNG. LADDER SHALL BE ON THE SIDE ADJACENT TO THE DOOR HINGE.
- C. PROVIDE 15" MINIMUM LATERAL CLEARANCE ON EACH SIDE OF LADDER ϕ .
- D. LADDER SHALL MEET THE REQUIREMENTS OF OSHA AND SHALL BE HOT-DIPPED GALVANIZED AFTER FABRICATION.
- E. LADDER SHALL BE ATTACHED TO FLOOR OF VAULT WITH STAINLESS STEEL HARDWARE PER MANUFACTURER RECOMMENDATIONS.
- F. STAINLESS STEEL SAFETY CHAINS SHALL BE ATTACHED TO LID. CHAIN POST MOUNTS ARE REQUIRED ON SINGLE DOOR VAULTS. CHAINS SHALL BE A MINIMUM OF 34" HIGH AT LOWEST POINT INCLUDING SAG, MAXIMUM OF 39", AND SHALL HAVE MID-SPAN CHAIN. CHAINS SHALL BE DETACHABLE ON LADDER SIDE OF VAULT AND POWDER COATED ORANGE FOR VISUAL AWARENESS.
- G. SINGLE DOOR VAULT FRAMES SHALL HAVE 2 POST MOUNTS ON THE INTERIOR OF THE FRAME FOR POST MOUNTED CHAINS.



**TUALATIN VALLEY
WATER DISTRICT**

APPROVED BY
PETER BOONE

DRAWING SCALE
NONE

VAULT LADDER INSTALLATION

EFF. DATE 07/01/24

STANDARD DETAIL

701